

Case No. PAC-E-21-07
Exhibit No. 1
Witness: Gary W. Hoogeveen

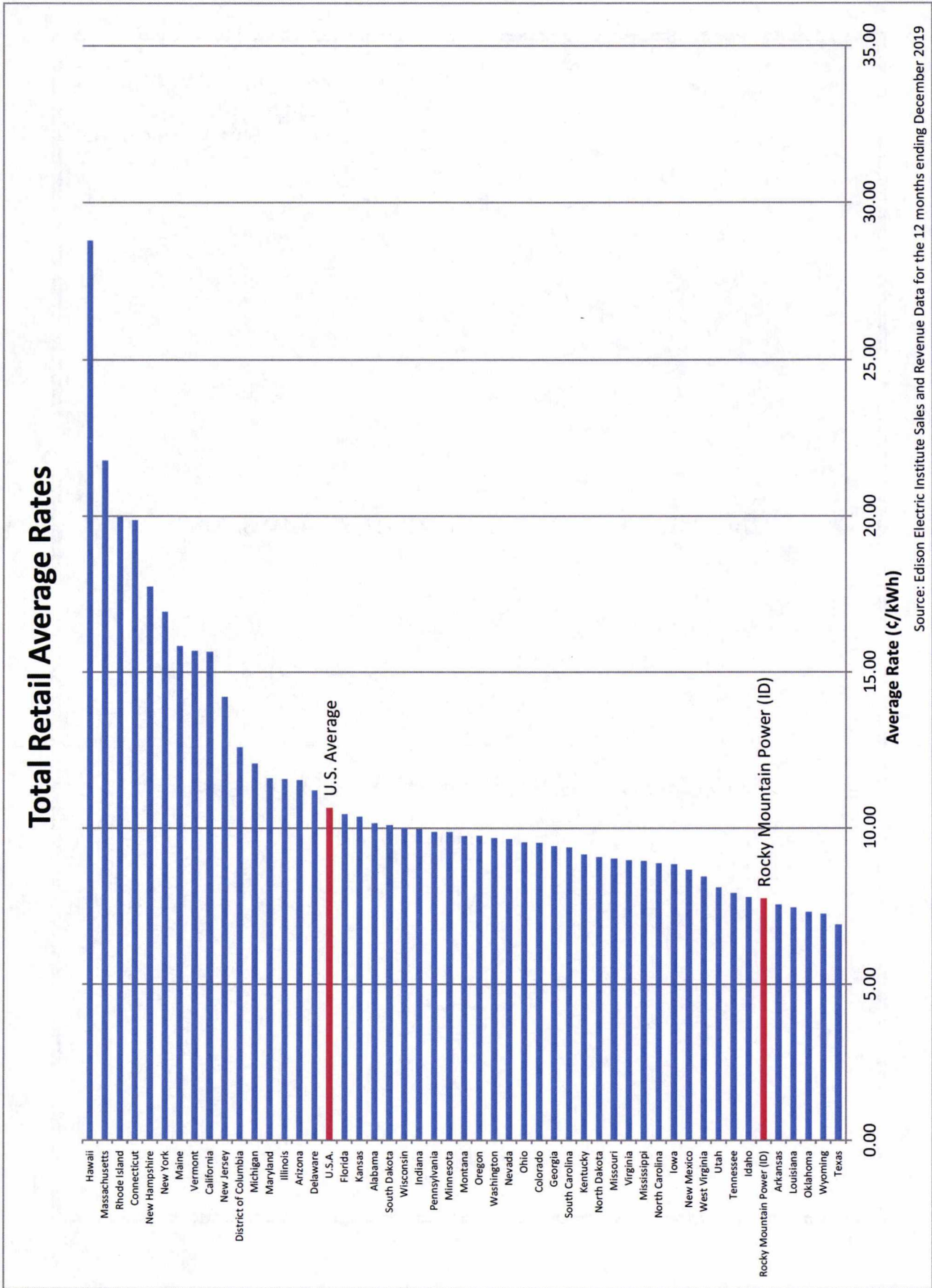
BEFORE THE IDAHO PUBLIC UTILITIES COMMISSION

ROCKY MOUNTAIN POWER

Exhibit Accompanying Direct Testimony of Gary W. Hoogeveen

Average Retail Rates by State

May 2021



Region Number	Region Name	State	Tot
7	West South Central	Texas	6.90
8	Mountain	Wyoming	7.26
7	West South Central	Oklahoma	7.31
7	West South Central	Louisiana	7.46
7	West South Central	Arkansas	7.55
Rocky Mountain Power (ID)			7.74
8	Mountain	Idaho	7.79
6	East South Central	Tennessee	7.92
8	Mountain	Utah	8.09
5	South Atlantic	West Virginia	8.45
8	Mountain	New Mexico	8.66
4	West North Central	Iowa	8.84
5	South Atlantic	North Carolina	8.88
6	East South Central	Mississippi	8.95
5	South Atlantic	Virginia	8.97
4	West North Central	Missouri	9.02
4	West North Central	North Dakota	9.07
6	East South Central	Kentucky	9.16
5	South Atlantic	South Carolina	9.37
5	South Atlantic	Georgia	9.43
8	Mountain	Colorado	9.52
5	South Atlantic	Ohio	9.53
8	Mountain	Nevada	9.64
9	Pacific	Washington	9.68
9	Pacific	Oregon	9.74
8	Mountain	Montana	9.75
4	West North Central	Minnesota	9.86
2	Mid-Atlantic	Pennsylvania	9.88
3	East North Central	Indiana	9.97
3	East North Central	Wisconsin	10.00
4	West North Central	South Dakota	10.09
6	East South Central	Alabama	10.16
4	West North Central	Kansas	10.37
3	East North Central	Florida	10.44
11	U.S.A.	U.S.A.	10.64
5	South Atlantic	Delaware	11.21
8	Mountain	Arizona	11.54
3	East North Central	Illinois	11.58
5	South Atlantic	Maryland	11.60
3	East North Central	Michigan	12.08
5	South Atlantic	District of Columbia	12.60
2	Mid-Atlantic	New Jersey	14.21
9	Pacific	California	15.64
1	New England	Vermont	15.67
1	New England	Maine	15.84
2	Mid-Atlantic	New York	16.95
1	New England	New Hampshire	17.74
1	New England	Connecticut	19.87
1	New England	Rhode Island	19.99
1	New England	Massachusetts	21.78
10	Hawaii	Hawaii	28.80

PacifiCorp Average Rates by Class
12 Months ending Dec 2019

	Tot	Res	Com	Ind
OR	9.39	10.45	8.85	7.64
WA	8.01	8.69	7.94	6.87
CA	13.68	12.85	14.92	13.60
UT	8.09	10.63	8.08	5.87
ID	7.74	9.94	8.52	6.82
WY	7.03	10.69	8.45	6.19
Pacific Power (OR, WA, CA)	9.25	10.18	8.85	7.67
Rocky Mountain Power (UT, ID, WY)	7.79	10.58	8.15	6.12
PacifiCorp Total	8.27	10.40	8.43	6.35